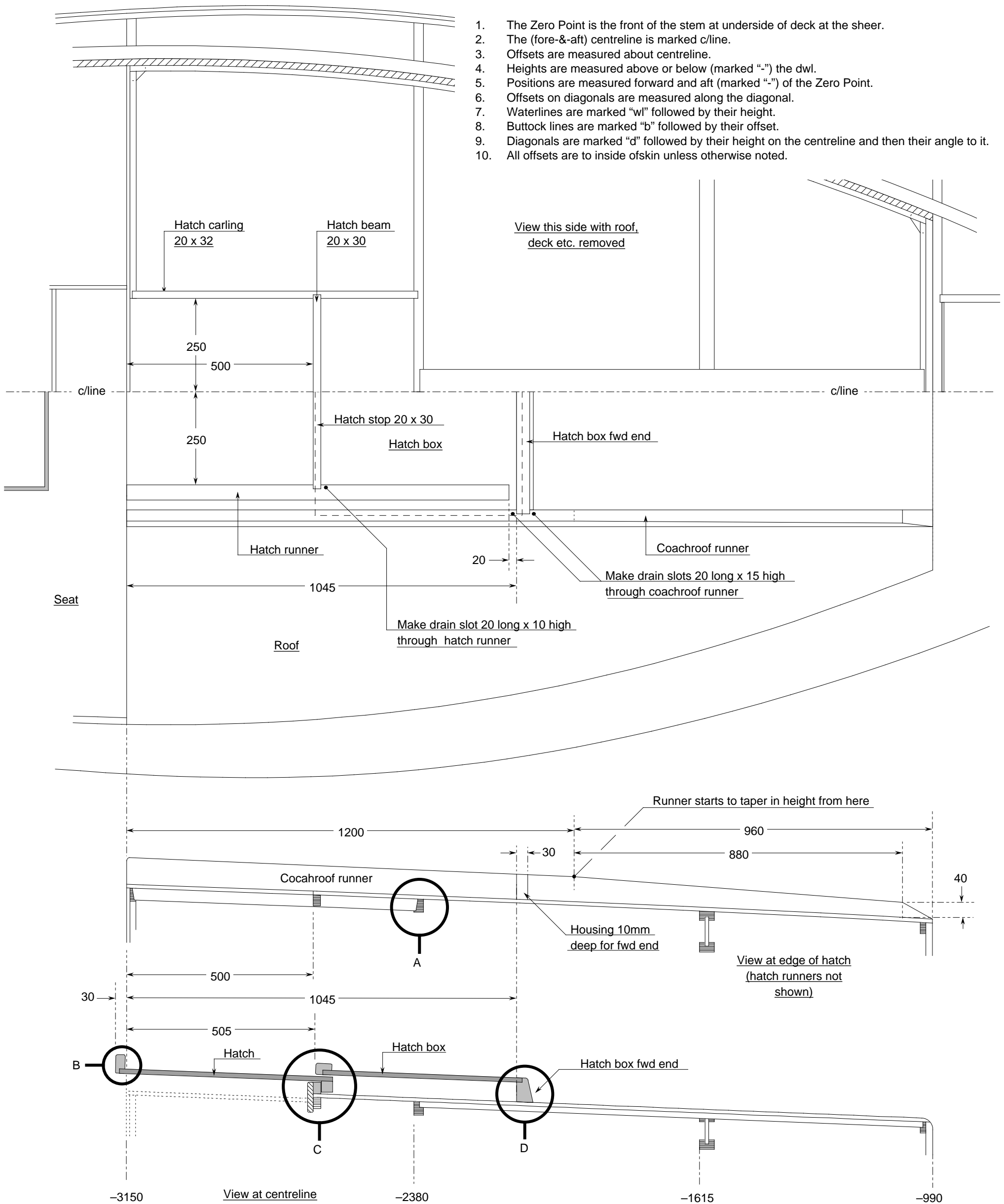


Notes:

1. The Zero Point is the front of the stem at underside of deck at the sheer.
2. The (fore-&-aft) centreline is marked c/line.
3. Offsets are measured about centreline.
4. Heights are measured above or below (marked "-") the dwl.
5. Positions are measured forward and aft (marked "-") of the Zero Point.
6. Offsets on diagonals are measured along the diagonal.
7. Waterlines are marked "wl" followed by their height.
8. Buttock lines are marked "b" followed by their offset.
9. Diagonals are marked "d" followed by their height on the centreline and then their angle to it.
10. All offsets are to inside of skin unless otherwise noted.



Specific Notes:

1. Hatch runners are bonded to coachroof top.
2. Coachroof runners are bonded to coachroof top and are structural.
3. Hatch stop is bonded to coachroof top and into housings in coachroof runners
4. Hatch handle and hatch fwd end are bonded to hatch.
5. Hatch box aft end is bonded to hatch box top.
6. Hatch box fwd end is bedded to coachroof top and into housing in coachroof runners, & secured with two screws each side through runners into ends of hatch box fwd end.
7. Hatch box top is bedded into rebates in coachroof runners and hatch box fwd end.
8. Fit four Tufnol pads to underside of hatch, two each side at fwd and aft ends. Pads are 75 x 25 x 3, bonded to underside of hatch.
9. Laminate hatch on top of coachroof before cutting hatch aperture. Induce extra camber by inserting 4mm thick strip full length fore-&-aft under first ply laminate.
10. Laminate hatch box top on top of hatch in similar way, with 4mm thick strip to induce extra camber.
11. To assemble hatch, leave hatch box fwd end and hatch box top off. Fit hatch complete. Slide box fwd end into housings and fix. Fix hatch box top (screwed and bedded).

Whisstock support@whisstock.com
boats and boat plans

Boat 119 Main Hatch	Scale	1/10
	Date	20/05/2000
	Plan No.	119/009/01
	Issue No.	01 web
© bmarkweb Ltd 2002 All Rights Reserved		All dimensions in millimetres unless noted otherwise