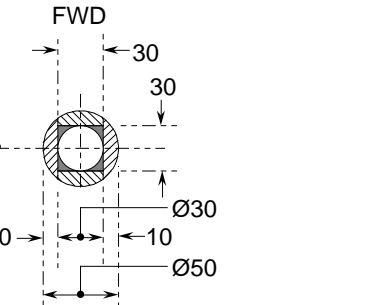
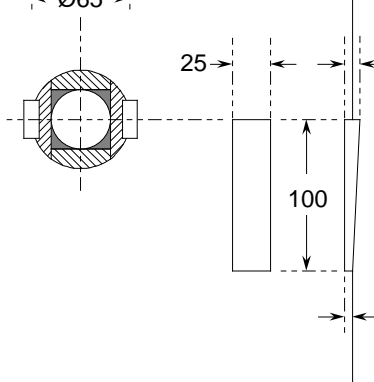
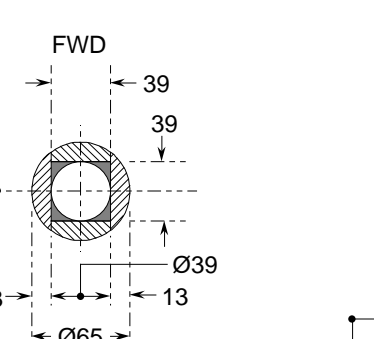


Truck Ø100 x 30



Classic Marine 45mm 2-eye mast band fits down on to shoulder



support@whisstock.com

Boat 077 Mainmast	Scale	1/10 & 1/5
	Date	20/05/2000
	Plan No.	077/011/02
	Issue No.	01 web
	All dimensions in millimetres unless noted otherwise	

Note: Spars made from North American Sitka Spruce or Douglas Fir, or similar softwood 450 g/m3 density.

Spars are hollow, WEST bonded and coated. Spars are WEST coated internally before assembly. Fair in ends of solid sections - do not stop them abruptly.

Mast has variable wall thickness and hollow and is made up from four rectangular sections + four corner chocks.

Boom has constant wall thicknesses (17mm top & bottom; 13mm sides) and is made up from four rectangular sections.

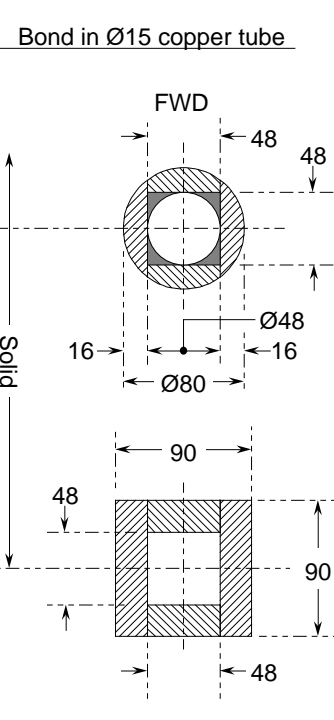
Gaff has a constant hollow ø25 and is made up from two rectangular sections hollowed out semi-circular 25 x 12.5. Gaff jaws are Ash or American White Oak (not European Oak).

Mast should be fitted with four cleats - throat & peak halyards to stbd; jib & staysail halyards to port. Cleat heights about 600 & 900 above mast base and staggered to allow halyards to run clear. Set cleats at about 10° angle and house 5mm into mast wall. Two more cleats are fixed to tabernacle.

Boom will need B-blocks (or cheek blocks) & cleats for reef lines.

Run electric wiring inside mast for navigation & anchor lights; clip wiring at about 300mm intervals. Alternatively, run plastic conduit through mast (exiting on fwd face at bottom end) with messenger through.

Ø indicates outside diameter; ø indicates inside diameter



MAINMAST
Length scale 1/10
Width scale 1/5

Top of boom
330
450
300
1070 to dwl

C/line of mast