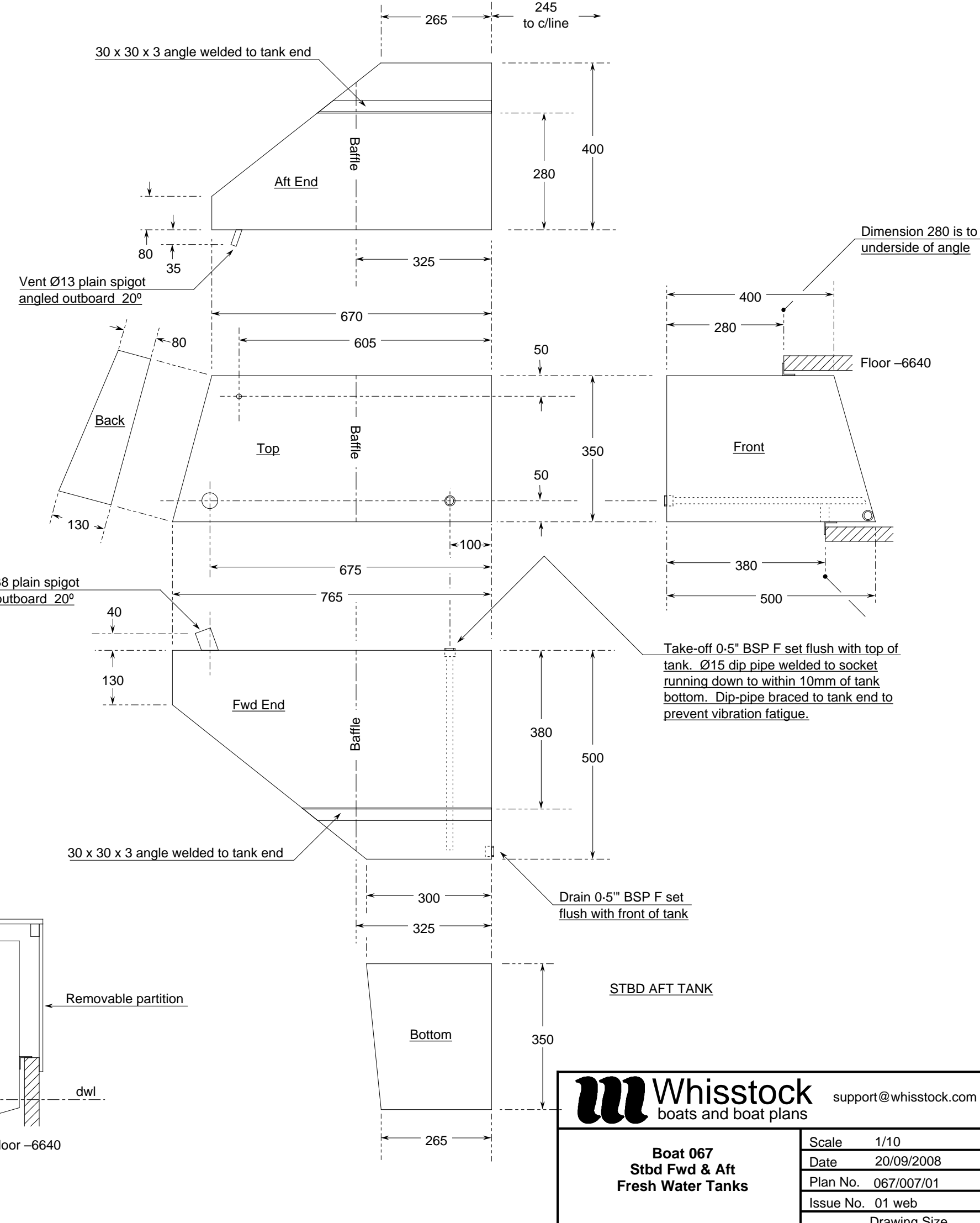
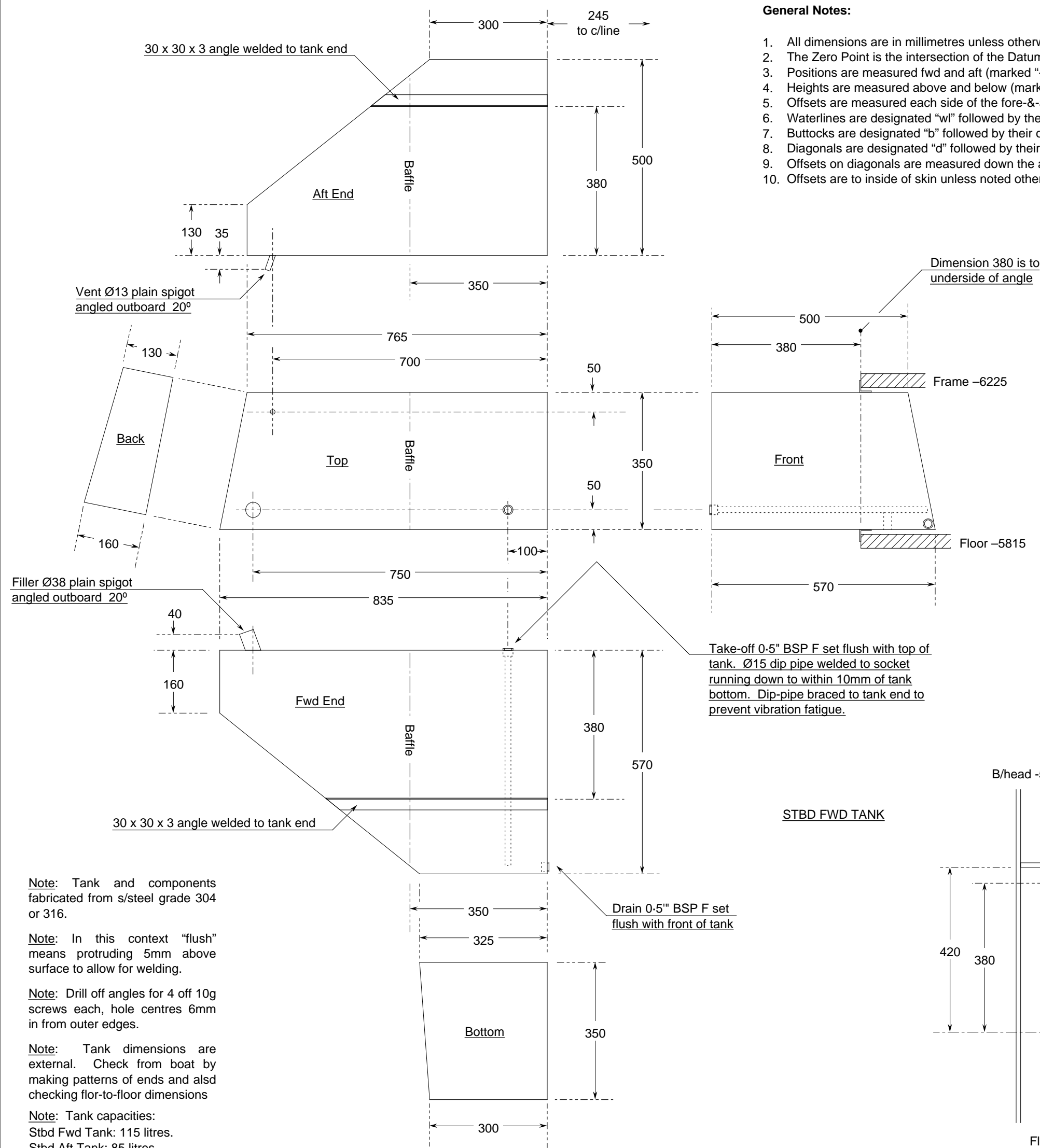


General Notes:

1. All dimensions are in millimetres unless otherwise noted.
2. The Zero Point is the intersection of the Datum Water Line (dwl) with the stemface.
3. Positions are measured fwd and aft (marked "-") of the Zero Point.
4. Heights are measured above and below (marked "-") the dwl.
5. Offsets are measured each side of the fore-&-aft centreline (marked "d" or c/line).
6. Waterlines are designated "wl" followed by their height.
7. Buttocks are designated "b" followed by their offset.
8. Diagonals are designated "d" followed by their start height on the centreline and their angle to it.
9. Offsets on diagonals are measured down the angle of the diagonal.
10. Offsets are to inside of skin unless noted otherwise.



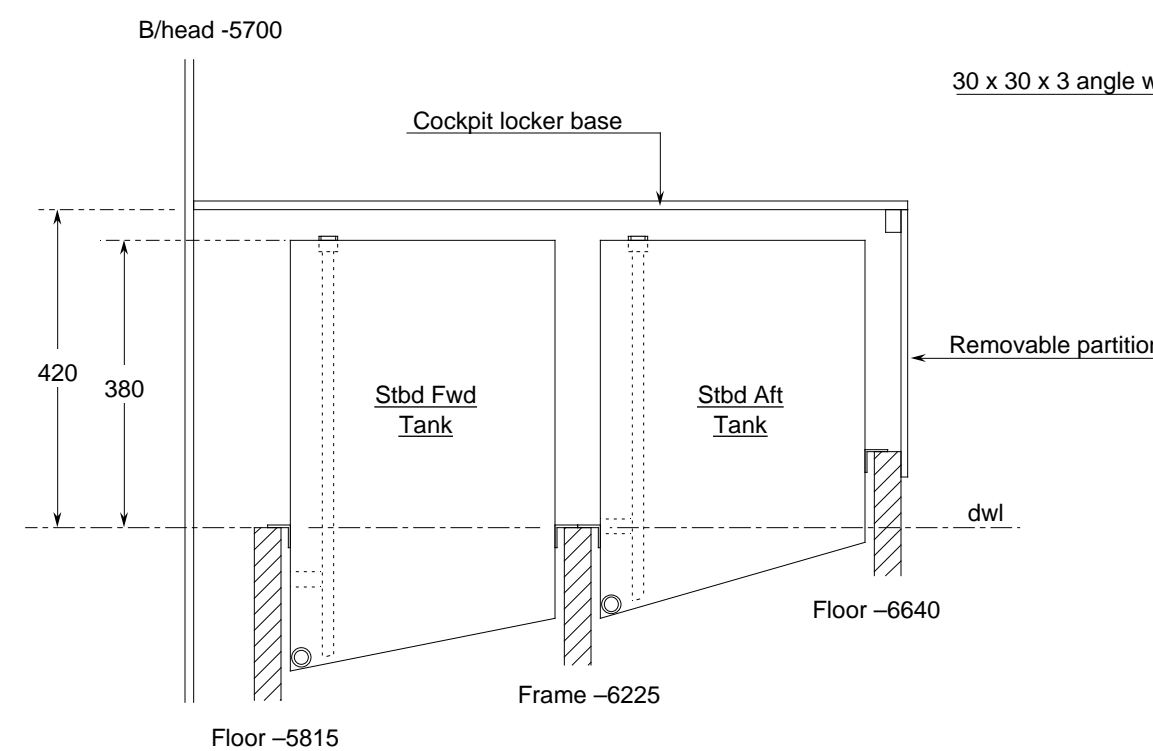
Note: Tank and components fabricated from s/steel grade 304 or 316.

Note: In this context "flush" means protruding 5mm above surface to allow for welding.


Note: Drill off angles for 4 off 10g screws each, hole centres 6mm in from outer edges.

Note: Tank dimensions are external. Check from boat by making patterns of ends and also checking floor-to-floor dimensions

Note: Tank capacities:
Stbd Fwd Tank: 115 litres.
Stbd Aft Tank: 85 litres



General Arrangement Of Stbd Tanks

 Whisstock boats and boat plans support@whisstock.com	Scale 1/10
	Date 20/09/2008
	Plan No. 067/007/01
	Issue No. 01 web
	Drawing Size 585 x 305 - 23" x 12"
Boat 067 Stbd Fwd & Aft Fresh Water Tanks	
<small>© Bmarkweb Ltd 2008 All Rights Reserved</small>	