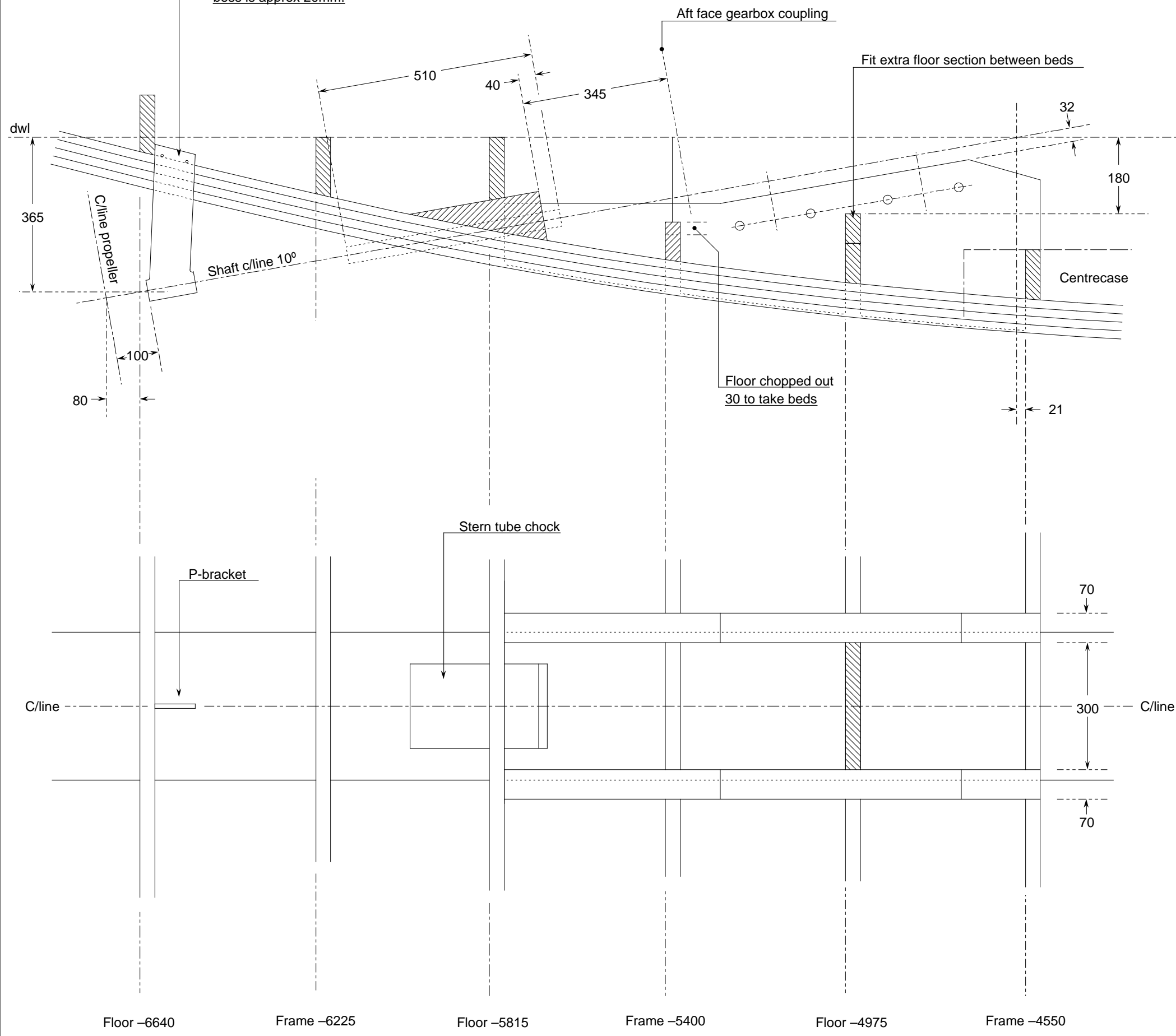
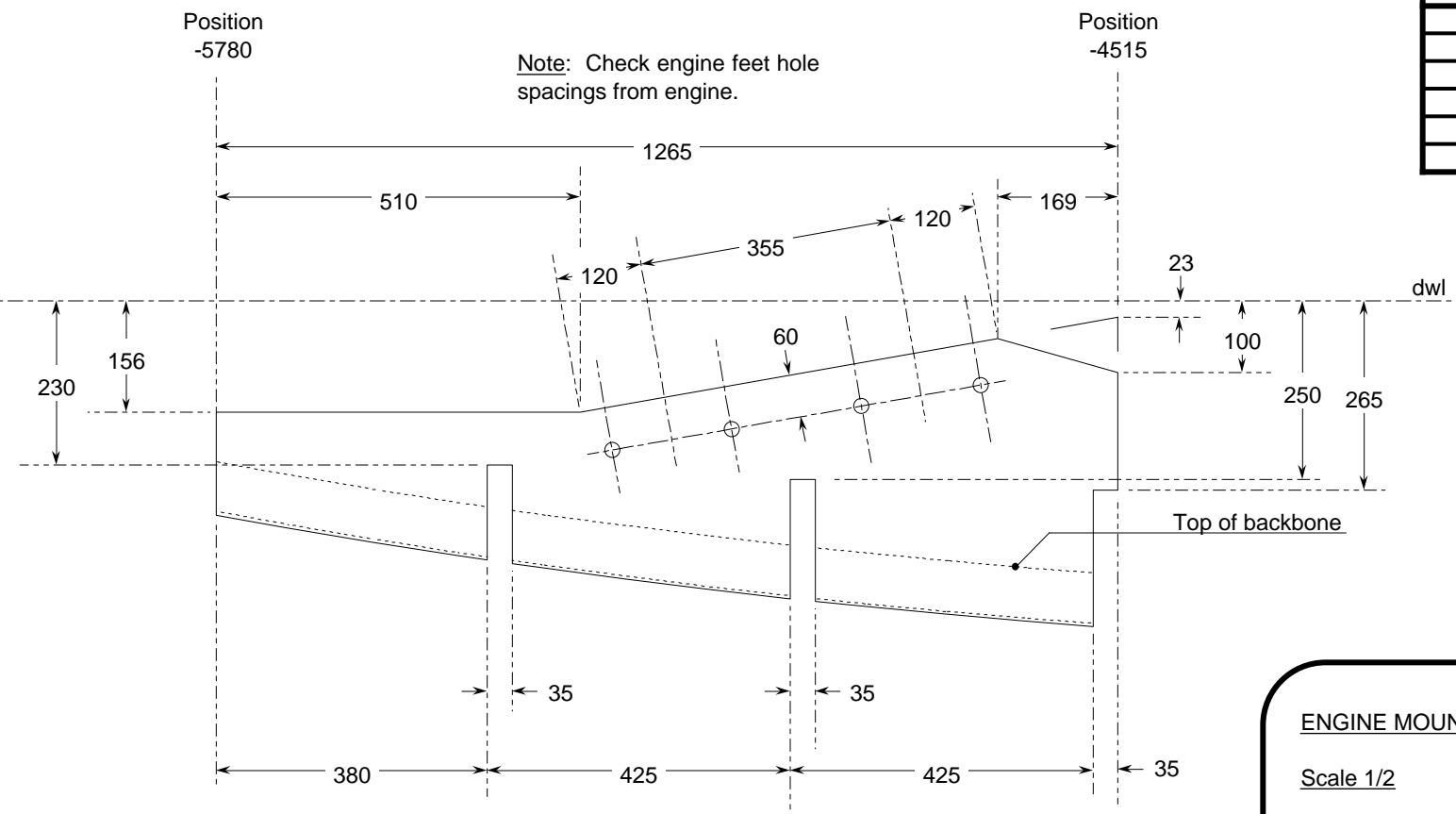


P-bracket. CJR Type A fitted with 25mm cutless bearing. Boss to leg angle of bracket is 12.5°, so bracket will require setting at 2.5° to give the 10° shaft angle. Final position of bracket will depend on propeller boss length. Clearance between fwd face of propeller boss and aft face of P-bracket boss is approx 20mm.



Floor -6640 Frame -6225 Floor -5815 Frame -5400 Floor -4975 Frame -4550

Shape & Bevels Of Bottom Edge		
Position	Height at Offset 150 (inboard face)	Height at Offset 220 (outboard face)
Fwd end (-4550)	-456	-452
Position -4975	-418	-413
Position -5400	-363	-359
Aft end (-5780)	-300	-295



Note: Check engine feet hole spacings from engine.

Note: Fit R & D 910 series coupling between gearbox flange and shaft flange. Use CJR Inner Fitting Type "F" (SWF25MTA), inner part only, with rubber hose connection to sterntube.

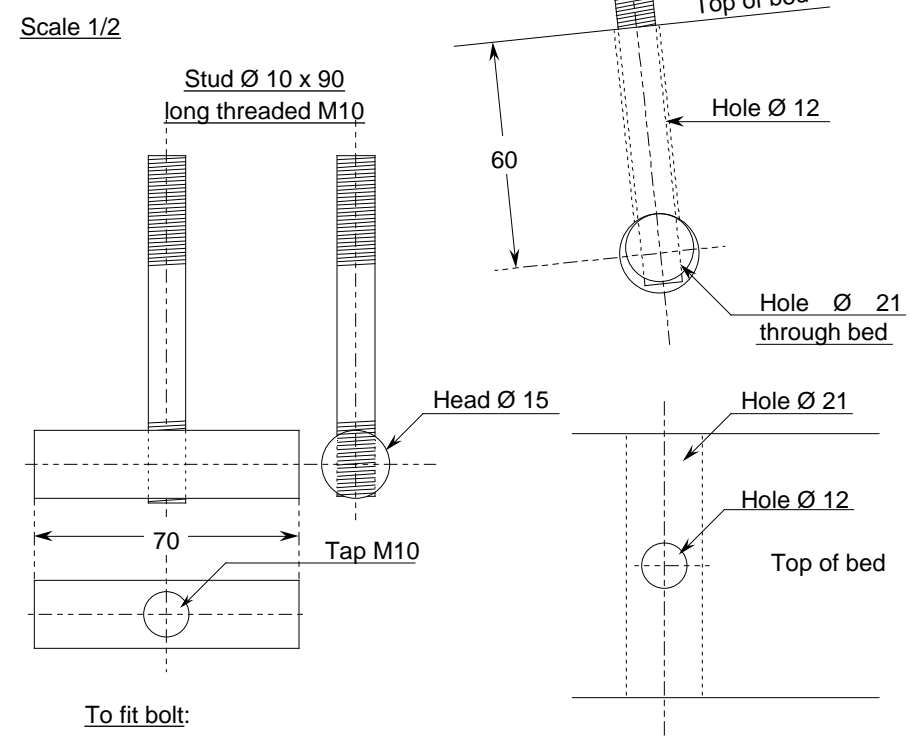
Note: Beds are housed out over backbone. WEST bond beds to floors and hull skin. WEST/#406 fillets (40mm) between beds & hull and beds & frames. No through-hull fastenings into beds. Drive screw fastenings from Floor -5815 into ends of beds and from inside faces of beds into Frame -4550. Because of change from Volvo to Yanmar some frames and floors will require minor modifications. And note that beds are housed 30mm deeper into floor of Frame -5400.

Note: P-bracket is WEST bonded in slot in backbone - follow correct procedures for bonding metals (see WEST manual). Drill P-bracket for two Ø6 stainless pins to rest on inside face of backbone. The WEST/glass over P-bracket, pins and backbone. Alternatively WEST bond a blind timber pad over P-bracket & pins.

General Notes:

- All dimensions are in millimetres unless otherwise noted.
- The Zero Point is the intersection of the Datum Water Line (dwl) with the sternface.
- Positions are measured fwd and aft (marked "-") of the Zero Point.
- Heights are measured above and below (marked "+") the dwl.
- Offsets are measured each side of the fore-&-aft centreline (marked "c/" or c/line).
- Waterlines are designated "wl" followed by their height.
- Buttocks are designated "b" followed by their offset.
- Diagonals are designated "d" followed by their start height on the centreline and their angle to it.
- Offsets on diagonals are measured down the angle of the diagonal.
- Offsets are to inside of skin unless noted otherwise.

ENGINE MOUNT HOLDING DOWN BOLT



To fit bolt:
Push head through 21mm Ø hole through bed and turn so that M10 tapped hole is visible through 12mm hole in bed. Push stud down 12mm hole and thread into hole in head (use Loctite on thread).