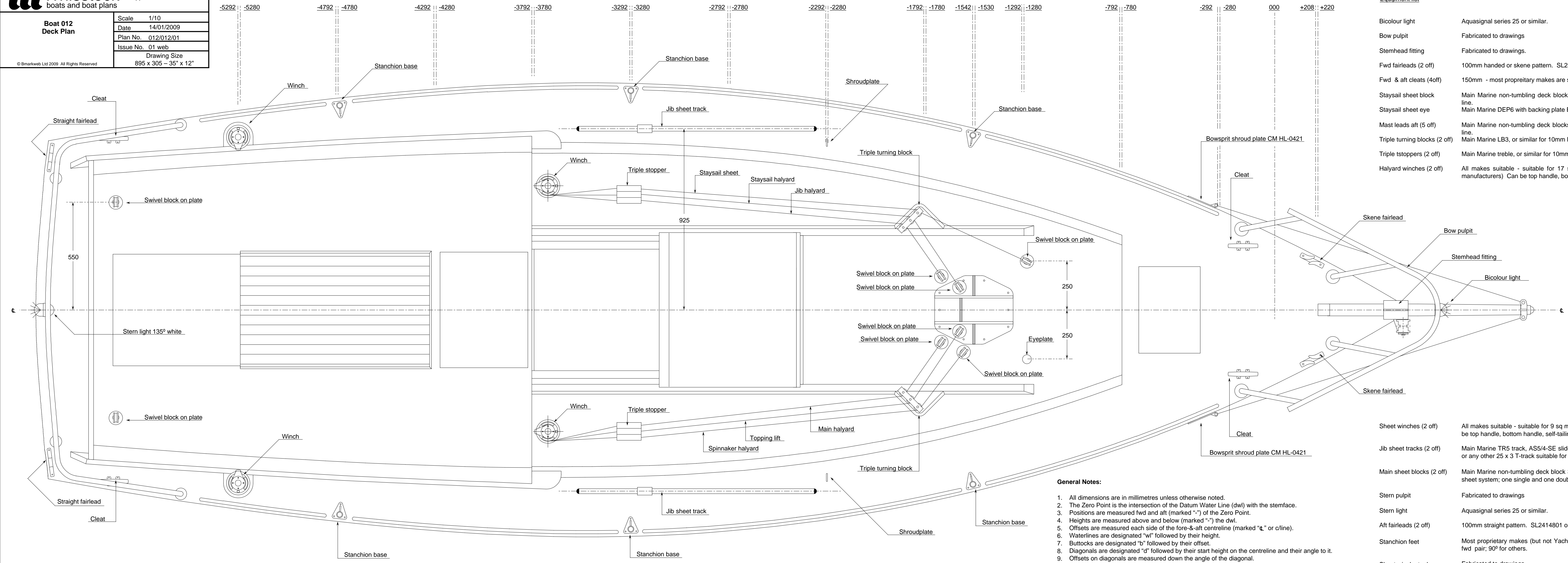


Whisstock boats and boat plans support@whisstock.com

Boat 012 Deck Plan

Scale	1/10
Date	14/01/2009
Plan No.	012/012/01
Issue No.	01 web
Drawing Size	895 x 305 - 35" x 12"

© Bmarkweb Ltd 2009 All Rights Reserved



Equipment list

Bicolour light	Aquasignal series 25 or similar.
Bow pulpit	Fabricated to drawings
Stemhead fitting	Fabricated to drawings.
Fwd fairleads (2 off)	100mm handed or skene pattern. SL24150001 or similar
Fwd & aft cleats (4off)	150mm - most propretary makes are suitable (bronze, stainless, tufnol or aluminium)
Staysail sheet block	Main Marine non-tumbling deck block Size 4 (with tufnol or nylon block) or similar for 10mm line.
Staysail sheet eye	Main Marine DEP6 with backing plate BP6, or similar
Mast leads aft (5 off)	Main Marine non-tumbling deck blocks Size 4 (with tufnol or nylon block) or similar for 10mm line.
Triple turning blocks (2 off)	Main Marine LB3, or similar for 10mm line
Triple tstoppers (2 off)	Main Marine treble, or similar for 10mm line
Halyard winches (2 off)	All makes suitable - suitable for 17 sq m mainsail halyard (about Size 8 or 10 with many manufacturers) Can be top handle, bottom handle, self-tailing or not.

- General Notes:**
- All dimensions are in millimetres unless otherwise noted.
 - The Zero Point is the intersection of the Datum Water Line (dwl) with the stemface.
 - Positions are measured fwd and aft (marked "-") of the Zero Point.
 - Heights are measured above and below (marked "-" or "c") the dwl.
 - Offsets are measured each side of the fore-&-aft centreline (marked "t" or c/line).
 - Waterlines are designated "w" followed by their height.
 - Buttocks are designated "b" followed by their offset.
 - Diagonals are designated "d" followed by their start height on the centreline and their angle to it.
 - Offsets on diagonals are measured down the angle of the diagonal.
 - Offsets are to inside of skin unless noted otherwise.

Sheet winches (2 off)	All makes suitable - suitable for 9 sq m jib sheet (about Size 6 with many manufacturers) Can be top handle, bottom handle, self-tailing or not. Winches will also take optional runner tails.
Jib sheet tracks (2 off)	Main Marine TR5 track, AS5/4-SE slider & block, TES end stops (4 off). Length 1200mm (4ft), or any other 25 x 3 T-track suitable for this size of boat.
Main sheet blocks (2 off)	Main Marine non-tumbling deck block Size 4 (one single, one single & beckett for single-ended sheet system; one single and one double for double-ended sheet system)
Stern pulpit	Fabricated to drawings
Stern light	Aquasignal series 25 or similar.
Aft fairleads (2 off)	100mm straight pattern. SL2414801 or similar
Stanchion feet	Most proprietary makes (but not Yacht Tests 068 or 069). Use angled (usually about 6°) for fwd pair; 90° for others.
Sheet winch stools	Fabricated to drawings